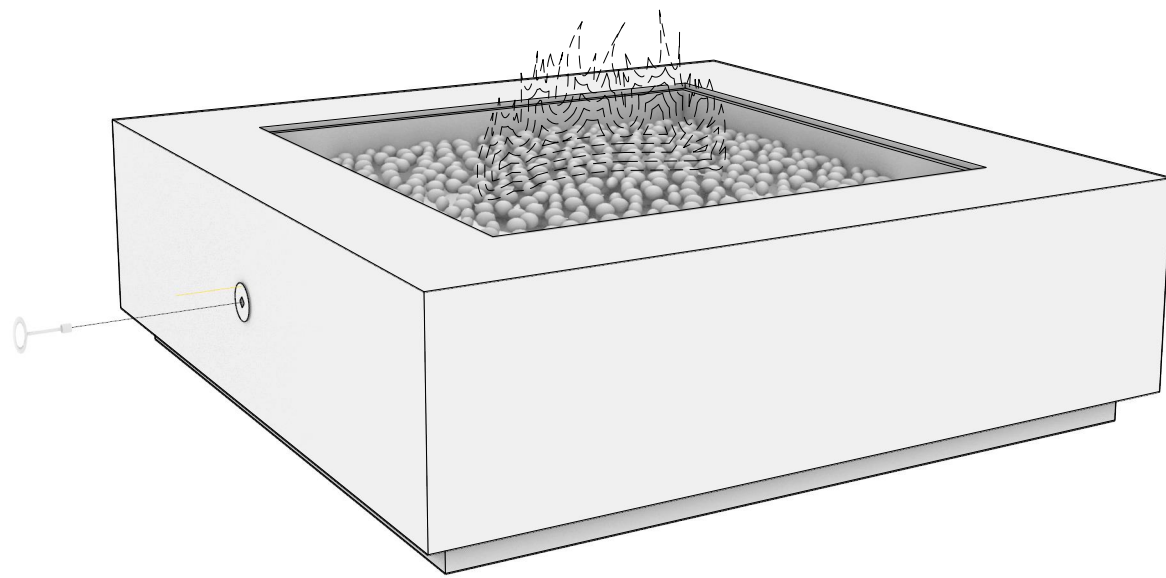
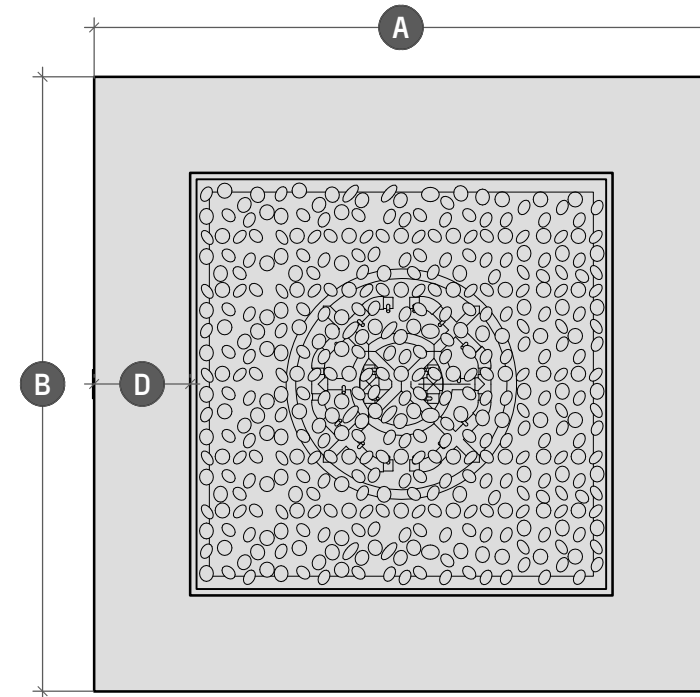


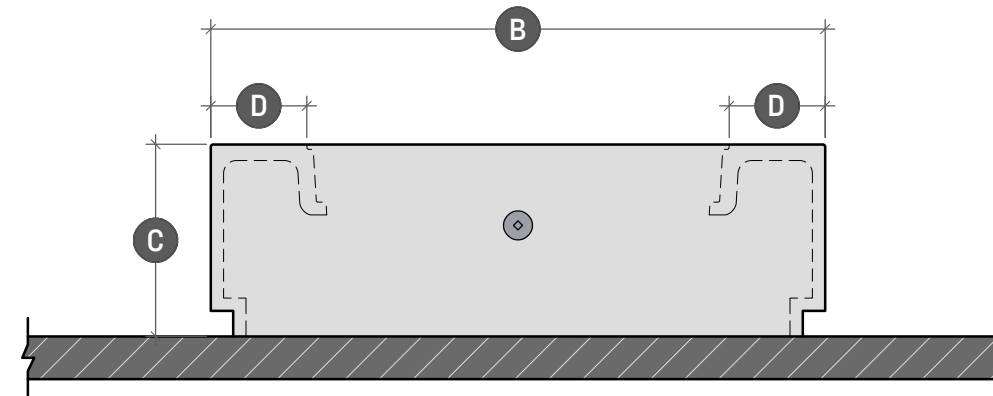
# BLOC squared FIRE TABLE



BL2.1.1 PERSPECTIVE VIEW  
SCALE: NA



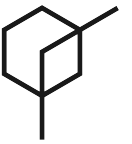
BL2.1.2 PLAN VIEW  
SCALE: 1" = 1' - 3"



BL2.1.3 SIDE ELEVATION  
SCALE: 1" = 1' - 3"

	BLOC squared 36*	BLOC squared 42*	BLOC squared 48	BLOC squared 52
Length	A - 36"	A - 42"	A - 48"	A - 52"
Width	B - 36"	B - 42"	B - 48"	B - 52"
Height	C - 13   15"	C - 13   15"	C - 15"	C - 15"
Surface	D - 5 1/2"	D - 6 1/2"	D - 7 1/2"	D - 8 1/2"

	*AVAILABLE IN STANDARD OR low
	Standard height is 15" Low height is 13"



**LUMACAST**

3261 National Ave  
San Diego, CA 92113  
t: +1 888 710 1026  
www.lumacast.com

**PROJECT INFORMATION**

PROJECT:  
LUMACAST FIRE TABLE  
BLOC squared

DESIGNER:  
LUMACAST

**DRAWING INFORMATION**

DRAWING PACKAGE:  
2D SHOP DRAWINGS  
SHEET CONTENTS:  
COVER SHEET

**MORE INFORMATION**



SCAN TO LEARN MORE

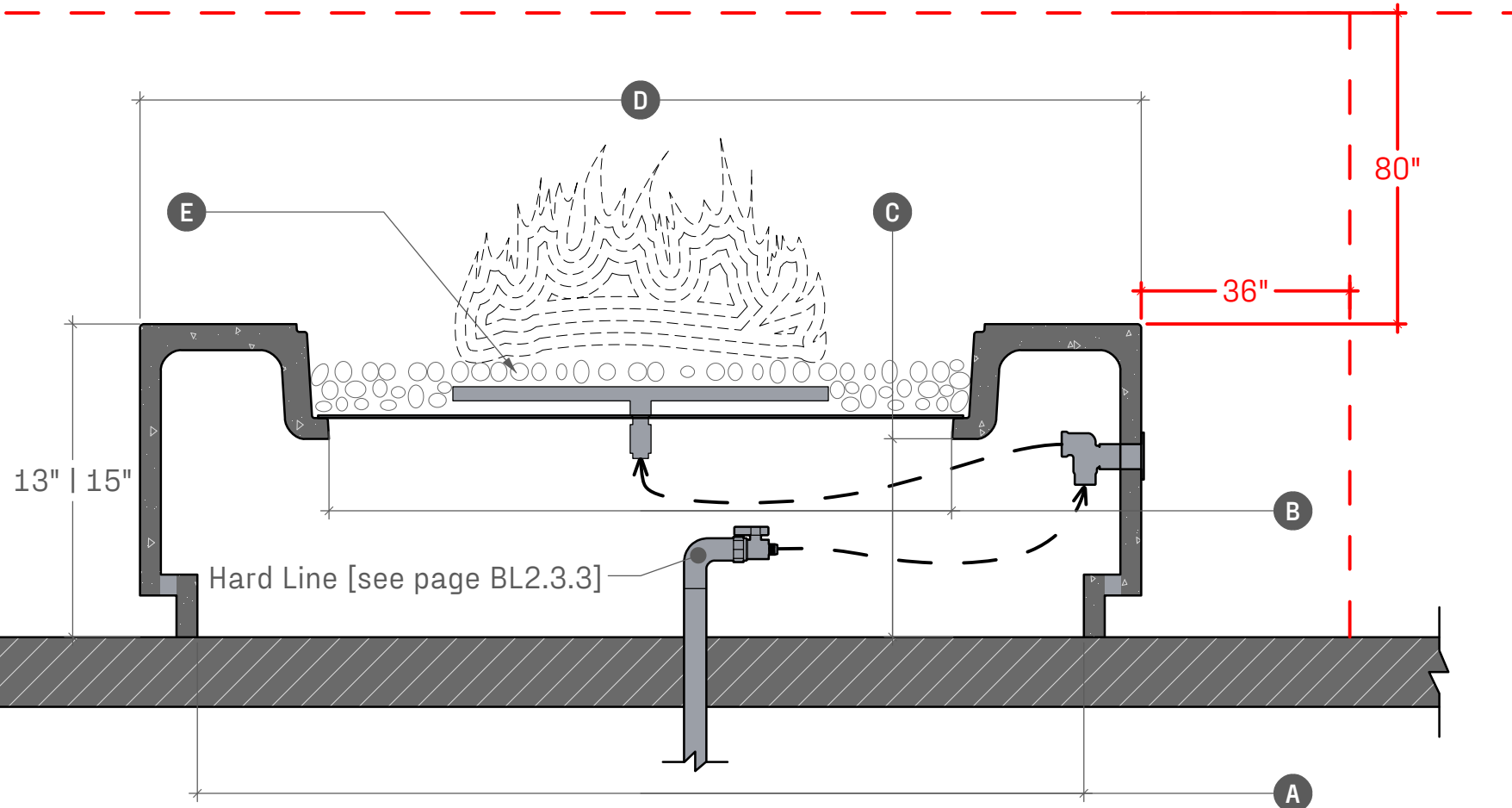
AUTHOR AUTHOR  
EGI 10/23

**BL2**

**.1**

SHEET NO

**MINIMUM CLEARANCES TO COMBUSTIBLES**



BL2.2.1 SECTION DETAIL  
SCALE: 1" = 0' - 8"

	BLOC squared 36*	BLOC squared 42*	BLOC squared 48	BLOC squared 52
<b>Opening at Base</b>	A - 20"	A - 26"	A - 32"	A - 36"
<b>Burner Pan Access</b>	B - 21"	B - 25"	B - 30"	B - 32"
<b>Burner Pan Height</b>	C - 9"	C - 9"	C - 9"	C - 9"
<b>Length</b>	D - 36"	D - 42"	D - 48"	D - 52"
<b>Burner Options</b>	E - - -	E - - -	E - - -	E - - -
Stainless Steel Burner	<b>88,000 BTU</b>	<b>95,000 BTU</b>	<b>150,000 BTU</b>	<b>150,000 BTU</b>
Warming Trands Burner	<b>120,000 BTU</b>	<b>140,000 BTU*</b>	<b>180,000 BTU*</b>	<b>180,000 BTU</b>
<b>Crated Dimensions</b>	39"x39"x23"	45"x45"x23"	51"x51"x23"	56"x56"x23"
<b>Shipping Weight</b>	- 515 LBs	- 655 LBs	- 820 LBs	- 930 LBs
<b>Shell Weight</b>	- 250 LBS	- 300 LBs	- 360 LBs	- 405 LBs

**! WARNINGS !**

FOR OUTDOOR USE ONLY

POTENTIAL CARBON MONOXIDE HAZARD

Do not store or use flammable liquids in the vicinity of this product

To be installed by licensed plumber or contractor

**TYPICAL CLEARANCES**

36" of clearance from the side elevations of the fire table

80" of clearance from the top surface of the fire table

**NATURAL GAS SUPPLY**

Ensure that the service supplying the fire feature is fitted with a positioned shut off valve that is easily accessible

**SUPPLY PRESSURE**

Minimum - 3.5" WC

Normal - 7.0" WC

Maximum - 14.0" WC (1/2psi)

- - -

Check with local inspector if any further specifications are required for permitted installations



**LUMACAST**

3261 National Ave  
San Diego, CA 92113  
t: +1 888 710 1026  
www.lumacast.com

**PROJECT INFORMATION**

PROJECT:  
LUMACAST FIRE TABLE  
BLOC squared

DESIGNER:  
LUMACAST

**DRAWING INFORMATION**

DRAWING PACKAGE:  
2D SHOP DRAWINGS  
SHEET CONTENTS:  
SPECIFICATIONS

**MORE INFORMATION**



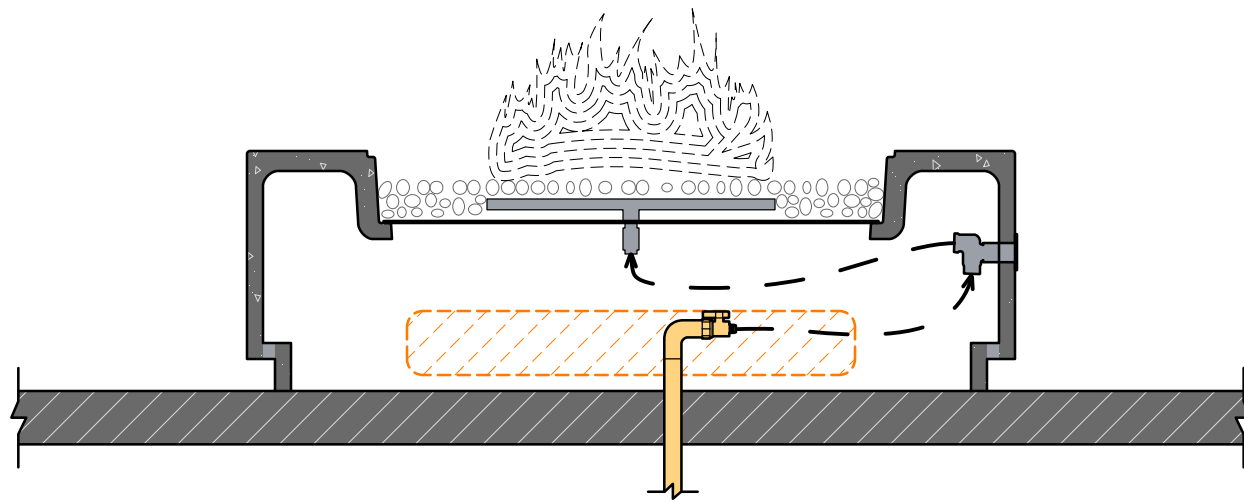
SCAN TO LEARN MORE

AUTHOR AUTHOR  
EGI 10/23

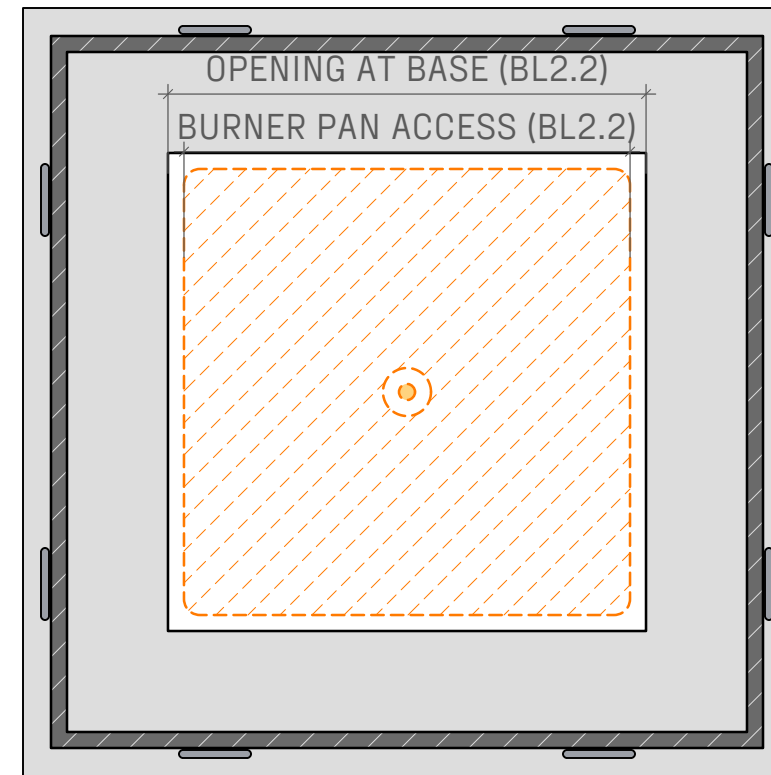
**BL2**

**.2**

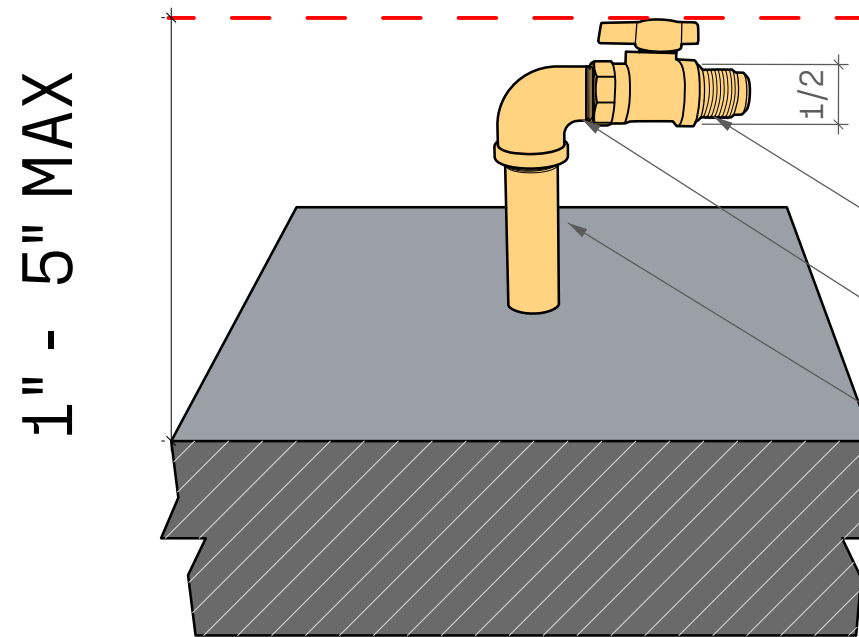
SHEET NO



BL2.3.1 SIDE SECTION  
SCALE: 1" = 1' - 0"



BL2.3.2 PLAN VIEW  
SCALE: 1" = 1' - 0"



BL2.3.3 PERSPECTIVE  
SCALE: n/a

- BRASS FNPT X FLARE GAS BALL VALVE: 1/2" STREET ELBOW
- GALVANIZED NIPPLE 3/4" - 1" DEPENDING ON BTU SEE PLUMBER

**PLUMBING HARD LINE**

For successful installation, hardline stub up should be capped off between 1" and 5" off finished floor.

Lumacast White Glove Delivery and Installation can only be done on IPS Piping



**LUMACAST**

3261 National Ave  
San Diego, CA 92113  
t: +1 888 710 1026  
www.lumacast.com

**PROJECT INFORMATION**

PROJECT:  
LUMACAST FIRE TABLE  
BLOC squared

DESIGNER:  
LUMACAST

**DRAWING INFORMATION**

DRAWING PACKAGE:  
2D SHOP DRAWINGS  
SHEET CONTENTS:  
HARDLINE DIAGRAM

**MORE INFORMATION**



SCAN TO LEARN MORE

AUTHOR	AUTHOR
EGI	10/23

**BL2**

**.3**

SHEET NO